

# Project Profile: Mayorhold Carpark

**Project:** Mayorhold Carpark Refurbishments

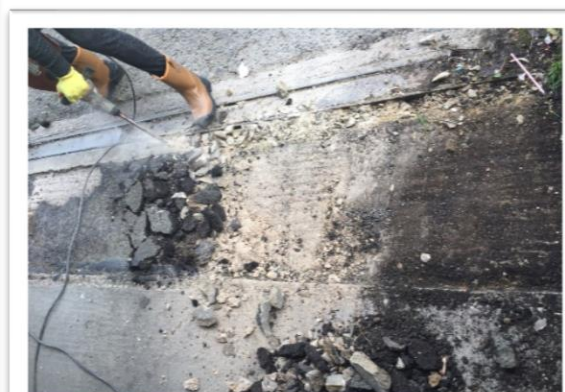
**Client:** BCAL Consulting



**The project:** The Mayorhold car park is a multi-storey long-stay car park situated in Northampton city centre, containing over 1000 spaces. Originally constructed in 1973, with refurbishment works completed in 2006, this car park was again in need of concrete repairs. APA was instructed to survey the car park in early 2018 which identified defects to the top screed of the car park surface which appeared to be of poor quality. As a result, several heavily trafficked areas of the car park had spalled and broken away, in some areas exposing cables and mesh of the now defunct cathodic system installed in 2006. APA Concrete Repairs Ltd were contracted to conduct concrete deck repairs to several levels of this multi-storey car park.



**The solution:** With repairs focussing on levels 2, 3 and 4 of the car park, all areas of defective concrete slabs were first broken out using a pneumatic drill, with any exposed cabling and mesh strips cut away and discarded. Once the areas were adequately broken out to a sufficient depth, cleaned and primed, they were repaired using Sika Rapid Repair Mortar. A rapid cure Tremco interdeck system was then applied to the repaired deck area, before reinstating new white lining and symbols, ensuring it matched the existing profile. Repairs to the car park entrance were also required, with the existing defective asphalt first removed, followed by the preparation of the concrete surface. Reinstatement was carried out using Sika Rapid Repair mortar as well as the application of a Tremco anti-slip coating.



**The outcome:** With all concrete defects to the relevant car park decks and entrance repaired, the lines of which the defunct cathodic protection had started to come through the surface of the deck have been removed and now repaired and protected. The addition of the interdeck coating also guaranteed enhanced protection from further degradation to the concrete surfaces. The works completed ensured the Mayorhold multi-storey carpark was successfully repaired and reinstated.



**Specified materials:**

- Centrecoat Premium CR line marking
- Sika Rapid Repair Mortar
- Sika MonoTop 610
- Tremco MMA Rapid Cure Interdeck System
- Tremco CP150 MMA Primer & Initiator
- Tremco CP900 Sealer
- Tremco CP590 Colour Paste 7016
- Tremco MMA Rapid Cure Interdeck Stripe Coat
- Tremco MMA Anti-slip coating

**For further enquires please contact Thomas Marsh**

E-mail: [ThomasMarsh@apaconcreterepairs.co.uk](mailto:ThomasMarsh@apaconcreterepairs.co.uk)

Mob: 07740 927048

**Northern Office**

Black Brook Way  
Greetland  
Halifax  
West Yorkshire  
HX4 8ED  
Telephone: 01422 379 640  
Fax: 01422 374 938

**Southern Office**

Abbey House  
Wellington Way  
Brooklands Business Park  
Weybridge  
London  
KT13 0TT  
Telephone: 0208 853 0627

E-mail: [info@apaconcreterepairs.co.uk](mailto:info@apaconcreterepairs.co.uk)

Web: [www.apaconcreterepairs.co.uk](http://www.apaconcreterepairs.co.uk)

PROFESSIONAL MEMBERSHIPS & ACCREDITATIONS HELD

